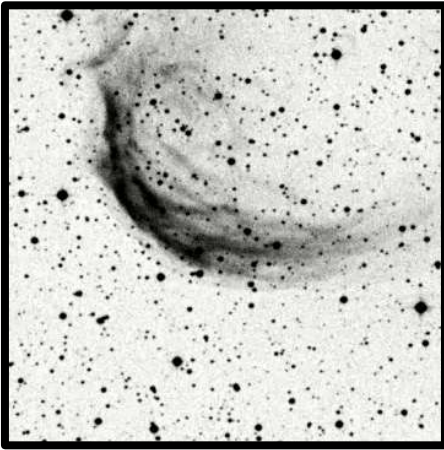


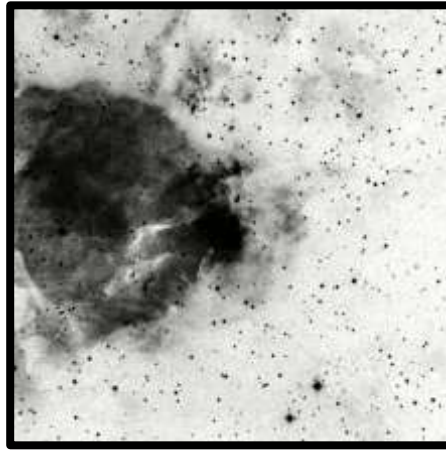
TSP Advanced Observing Program – 2014

"Seeing Red"

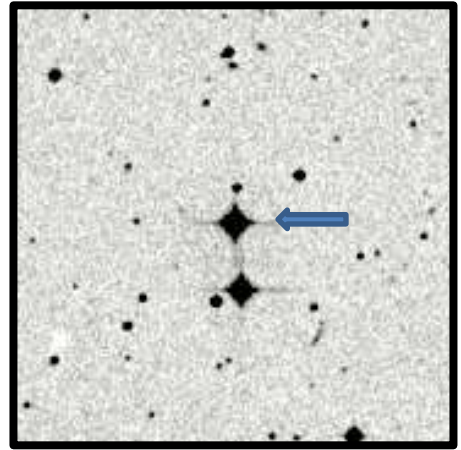
Observe and Catalog any 20 Objects



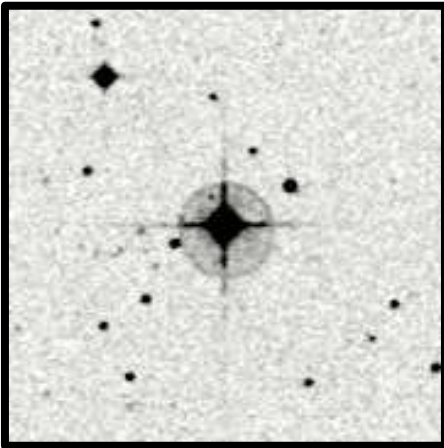
Sh 2-188 10' x 10'



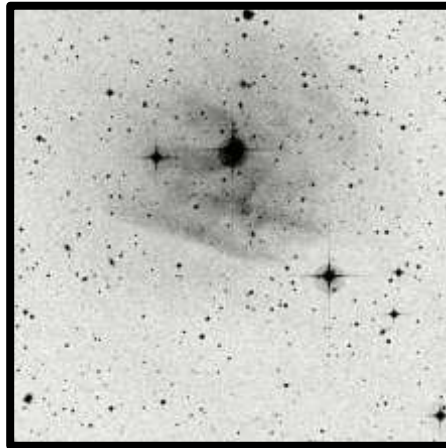
NGC 896 10' x 10'



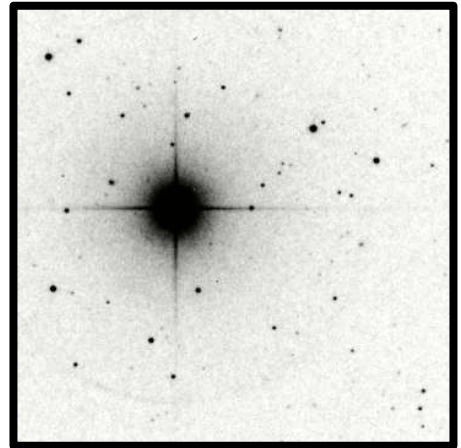
V Hydra 5.0' x 5.0'



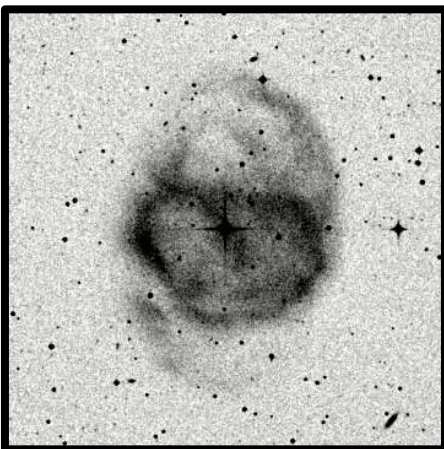
SS Virgo 5.0' x 5.0'



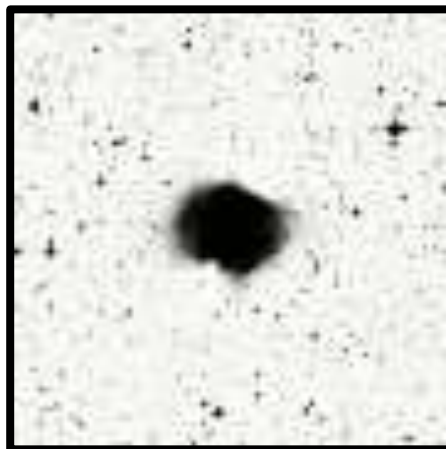
Abell 35, PK 303+40.1 15.0' x 15.0'



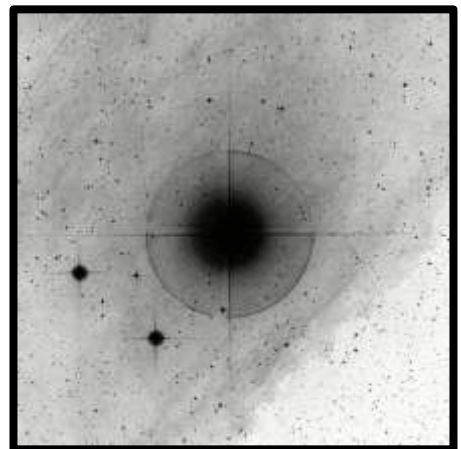
RY Draconis 10.0' x 10.0'



Abell 36 10.0' x 10.0'

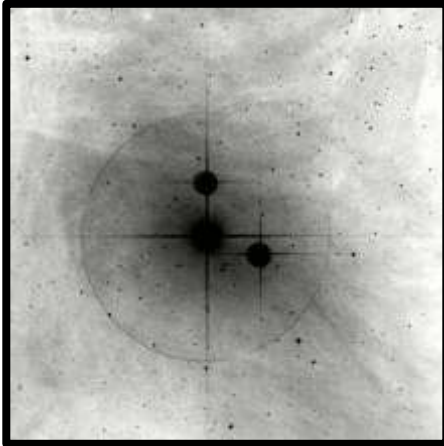


NGC 6072 5.0' x 5.0'

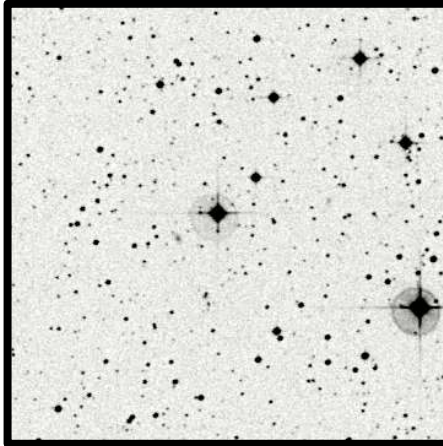


IC 4592, LBN 1114 30.0' x 30.0'

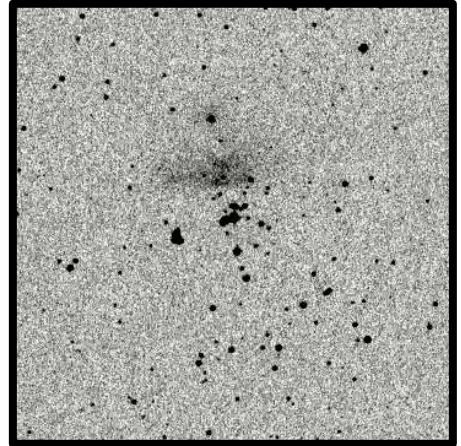
TSP Advanced Observing – 2014 - "Seeing Red"



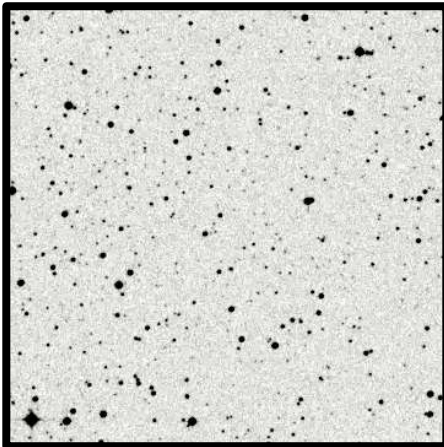
IC 4604 Rho Ophi 20.0' x 20.0'



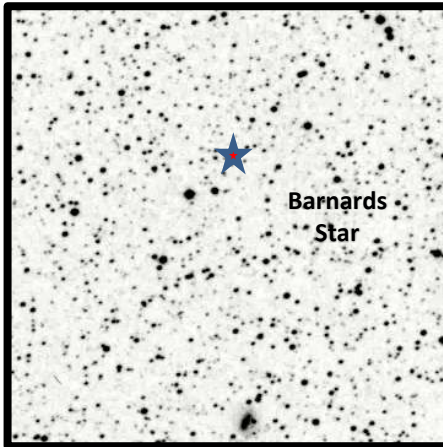
Wolf 630 A,B,C 10.0' x 10.0'



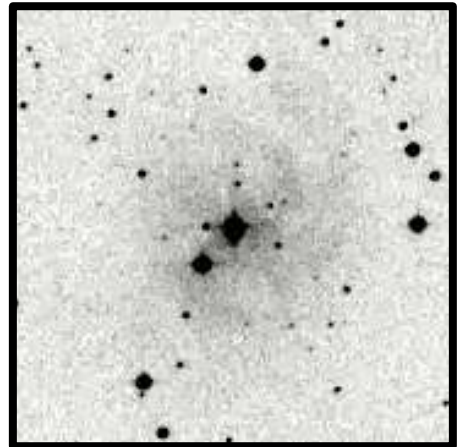
NGC 6357 10.0' X 10.0'



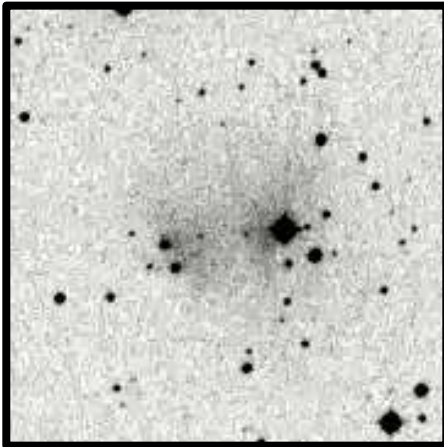
Sgr A*, Milky Way Center 10.0' x 10.0'



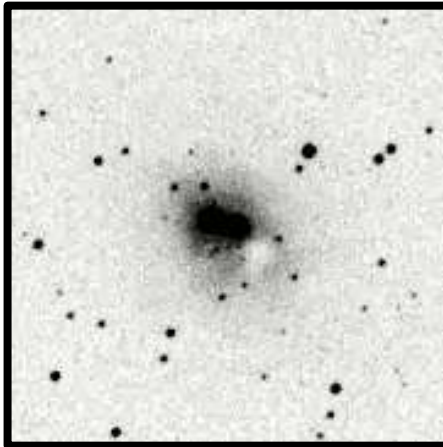
Barnard's Star 10.0' x 10.0'



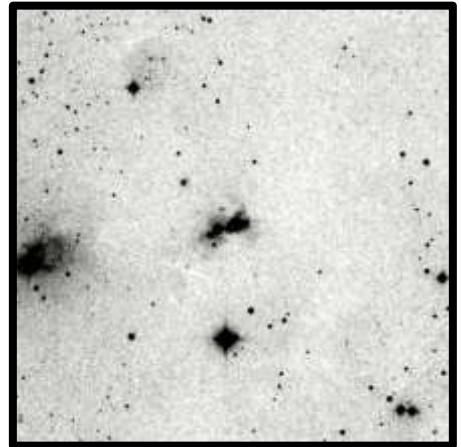
NGC 6559 5.0' x 5.0'



NGC 6589 5.0' x 5.0'

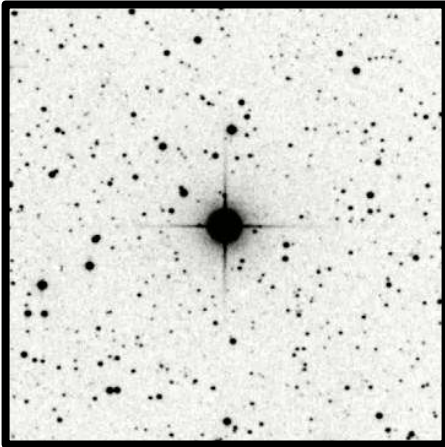


NGC 6590 5.0' x 5.0'

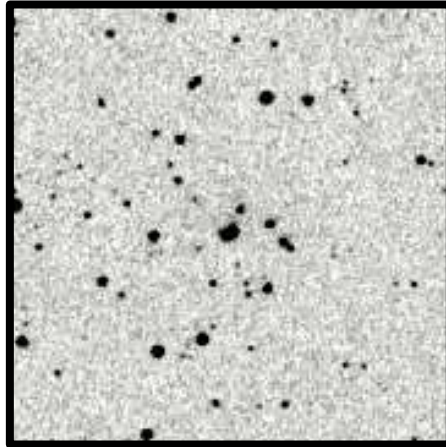


Serpen's Object 25.0' x 25.0'

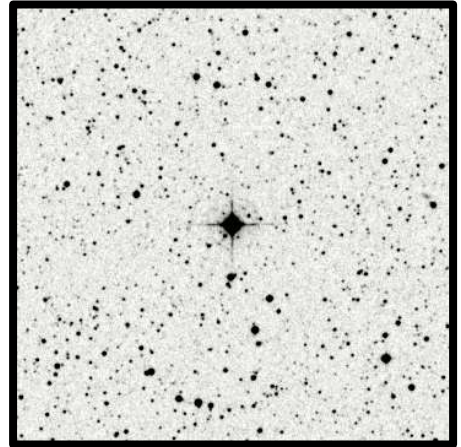
TSP Advanced Observing – 2014 - "Seeing Red"



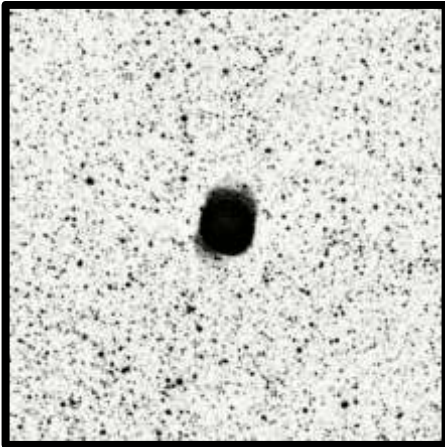
T Lyra 10.0' x 10.0'



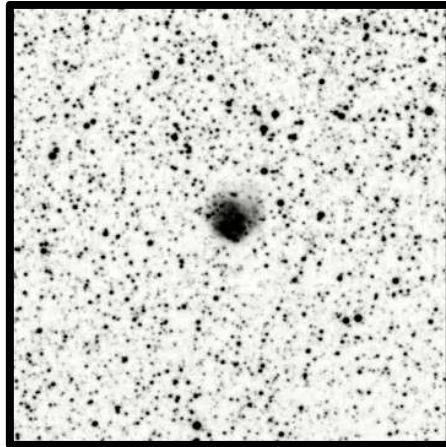
Sh 2-61, PK26+01.0 10.0' x 10.0'



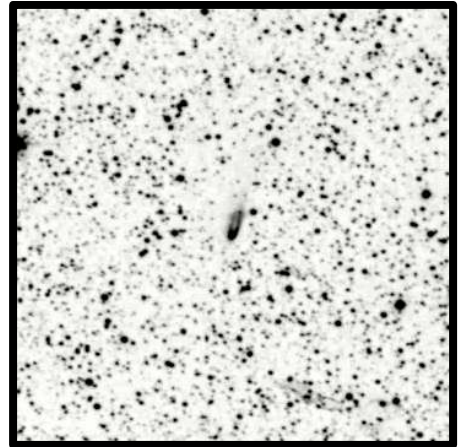
V Aquila 10.0' x 10.0'



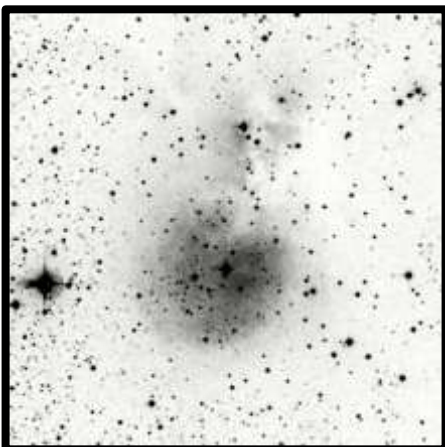
NGC 6781 15.0' x 15.0



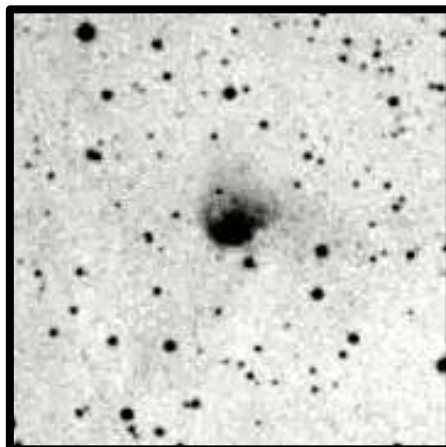
Sh 2-83 10.0' x 10.0'



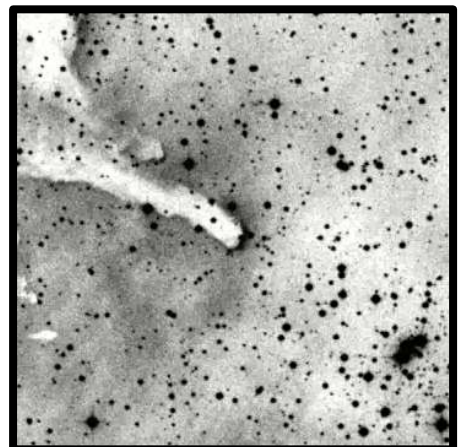
Parsamyan 21 10.0' x 10.0'



Sh 2-82 5.0' x 5.0'

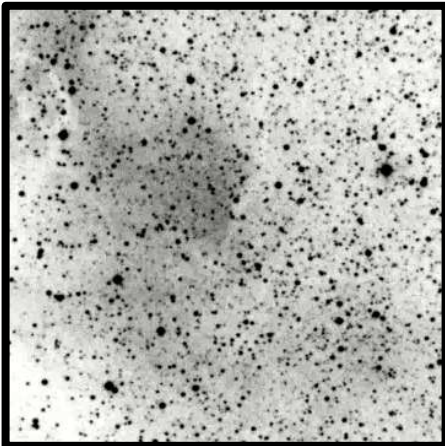


NGC 6820 5.0' x 5.0'

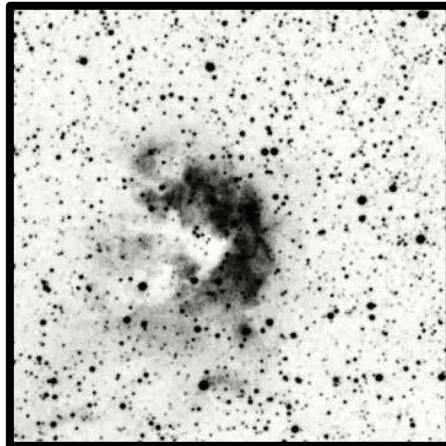


CAB2008-V39 10.0' x 10.0'

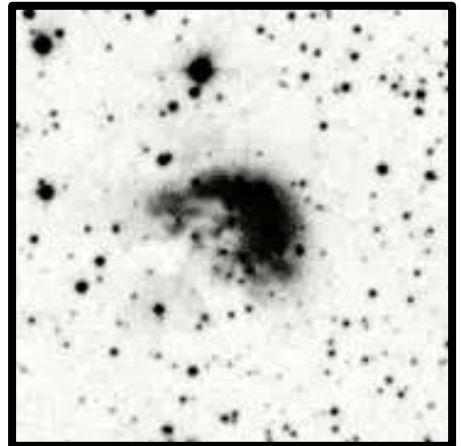
TSP Advanced Observing – 2014 - "Seeing Red"



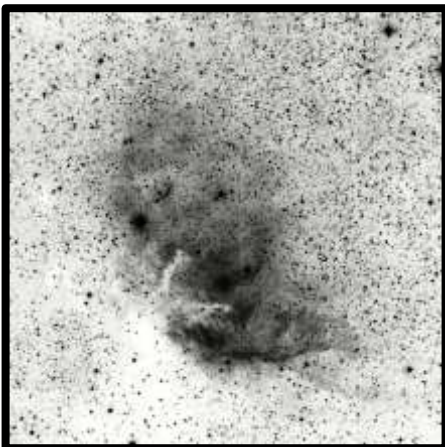
Sh 2-88 10.0' x 10.0'



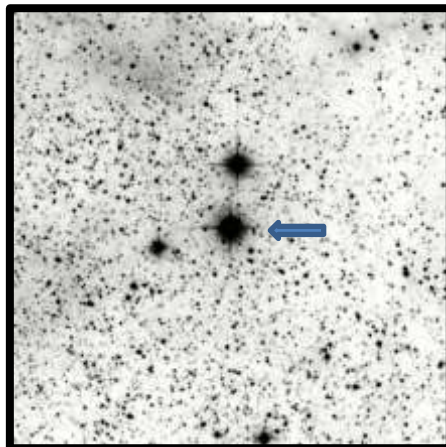
Sh 2-90, LBN 144 10.0' x 10.0'



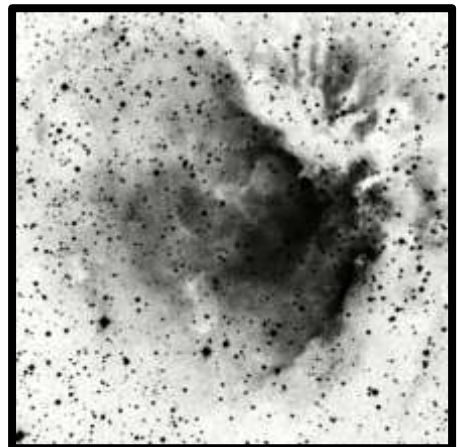
Sh 2-93 5.0' x 5.0'



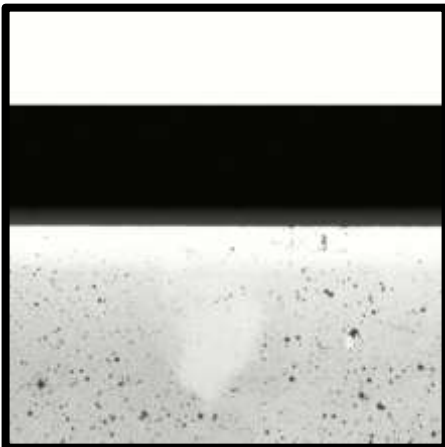
Sh 2-101 25.0' x 25.0'



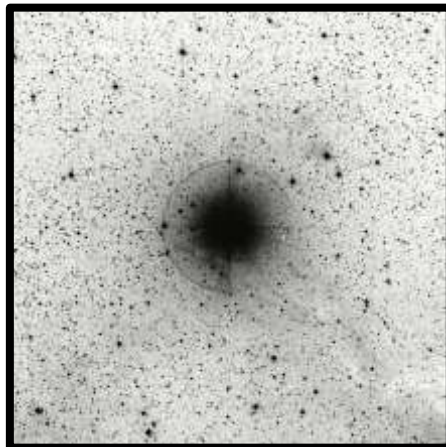
RS Cygnus (Middle Star) 15.0' x 15.0'



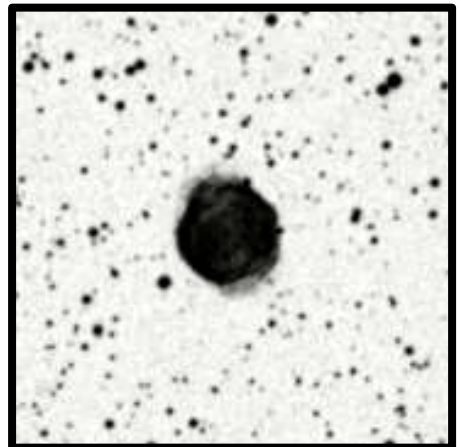
Sh 2-112 15.0' x 15.0'



B 161 inside IC 1396 15.0' x 15.0'

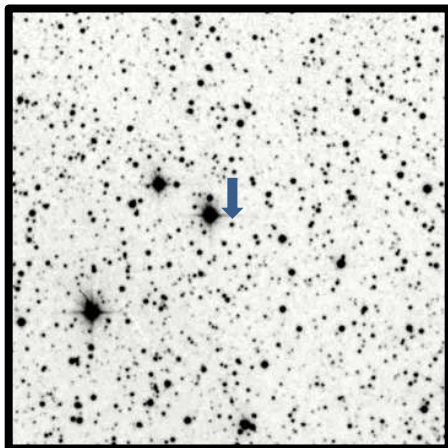


Herschel's Garnet Star 25.0' x 25.0'



NGC 7139 5.0' x 5.0'

TSP Advanced Observing – 2014 - "Seeing Red"



Kruger 60A & B 10.0' x 10.0'

Clear – Steady Skies,

Larry Mitchell – Chairman TSP Advanced Observing Program

Team Members – Many Thanks - Without their assistance this Program would not be Possible

Jim Chandler

Ana Chandler

Keith Rivich (K2)

Amelia Goldberg

Steve Goldberg

Jose Sancho